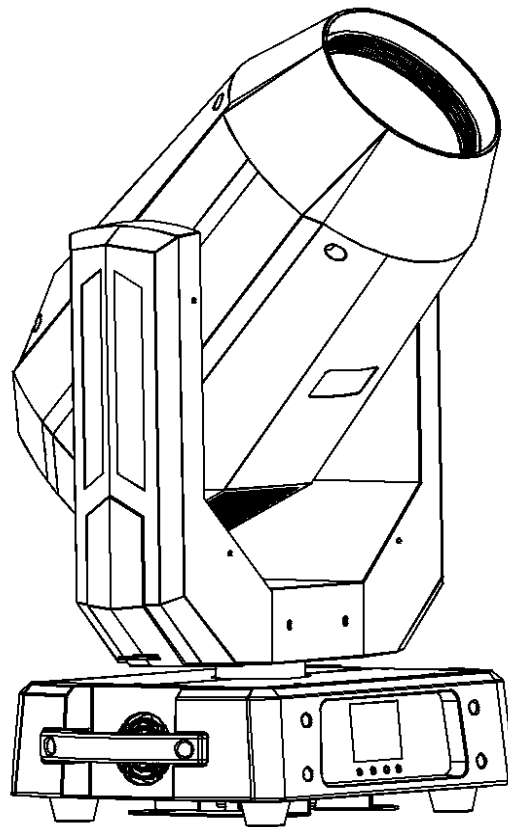


350W Beam Moving Head Light

User Manual



CONTENT

Fixture introduction	2
Safety instructions	3
Installation	5
AC Power.....	7
DMX control	10
Fixture setting	11
DMX Channels	12
Maintenance Instruction	18

Thanks for purchasing the 350W beam moving head light. Please read the user manual instruction carefully before using the produce. To avoid any danger to your health and lost.

This device has left our premises in absolutely perfect condition. In order to maintain this condition and to ensure a safe operation, it is absolutely necessary for the user to follow the safety instructions and warning notes written in this manual

Technical Specifications..

Voltage: AC100V-240V 50/60Hz

Power: 460W

Light Source: PHILIPS, YODN 350W

Ballast: Electronic Ballast

Channels: DMX 16/18 Channels

Color wheel: One color wheel, 14 colors+ open

One colorful color wheel, combine with the prism wheel to make wonderful color effect

Gobo: One fixed gobo wheel with 17 gobos+ open

Prism: 2 prism wheel, prism rotating, 2 prism wheels can overlay together

16-facet prism+ honeycomb like prism, customized prism wheel

Frost: Gradually frost

Strobe: Double-blade strobe, 0.5-12/sec variable strobe effect

Lens: High precious optical system, optical dimension 155mm

Movement: Pan 540° ,8/16 bit resolution

Tilt 270° ,8/16 bit resolution

Applying optoelectronic technology, Pan/Tilt resets automatically once error happens. 3-facet step motors makes the pan and tilt movement more smoothly.

IP Grade: IP20

Size: 386*280*535mm

Safety instructions

CAUTION!



FOR YOUR OWN SAFETY, PLEASE READ THIS USER MANUAL CAREFULLY BEFORE YOU INITIAL START - UP!

Be careful with your operations. With a high voltage you can suffer a dangerous electric shock when touching the wires!



Electric shock protection

- ◆ This device falls under protection class I. Therefore it is essential to connect the yellow/green conductor to earth.
- ◆ Make sure that the available voltage is not higher than stated on the rear panel
- ◆ The electric connection, repairs and servicing must be carried out by a qualified employee.
- ◆ Do not connect this device to a dimmer pack.
- ◆ During the operation the housing becomes hot). Allow the fixture to cool approximately 20 minutes prior to manipulate with it.
- ◆ Make sure that the power-cord is never crimped or damaged by sharp edges. Check the device and the power cord from time to time.
- ◆ For protection from electric shock, the fixture must be earthed!
- ◆ Keep this device away from rain and moisture! Unplug mains lead before opening the housing!



BULB SAFETY

- ◆ Do not switch the fixture on and off in short intervals as this would reduce the lamp's life.
- ◆ During the initial start-up some smoke or smell may arise. This is a normal process and does not necessarily mean that the device is defective.
- ◆ For replacement use lamps and fuses of same type and rating only.
- ◆ The lamp must never be ignited if the objective-lens or any housing-cover is open, as discharge lamps may explode and emit a high ultraviolet radiation, which may cause burns.
- ◆ The lamp shall be changed if it has become damaged or thermally deformed



BURNS AND FIRE PREVENTION

- ◆ When installing the device, make sure there is no highly inflammable material (decoration articles, etc.) in a distance of min. 1 m.
- ◆ The minimum distance of 10 meters between light output from the moving head and the lit objects must be kept!
- ◆ Do not touch the device' s housing bare hands during its operation (housing becomes hot)!
- ◆ The maximum ambient temperature 45° C must never be exceeded.
- ◆ Please use the original packaging if the device is to be transported.
- ◆ Please consider that unauthorized modifications on the device are forbidden due to safety reasons!
- ◆ If this device will be operated in any way different to the one described in this manual, the product may suffer damages and the guarantee becomes void. Furthermore, any other operation may lead to dangers like short circuit, burns, electric shock, burns due to ultraviolet radiation, lamp explosion, crash etc.



FALLING DAMAGE PREVENTION

- ◆ When choosing the installation-spot, please make sure that the device is not exposed to extreme heat, moisture or dust. There should not be any cables lying around. You endanger your own and the safety of others!
- ◆ Make sure that the area below the installation place is blocked when rigging, derigging or servicing the fixture.
- ◆ Always fix the fixture with an appropriate safety rope. Fix the safety rope at the correct holes only
- ◆ Operate the device only after having familiarized with its functions. Do not permit operation by persons not qualified for operating the device. Most damages are the result of unprofessional operation!

Installation

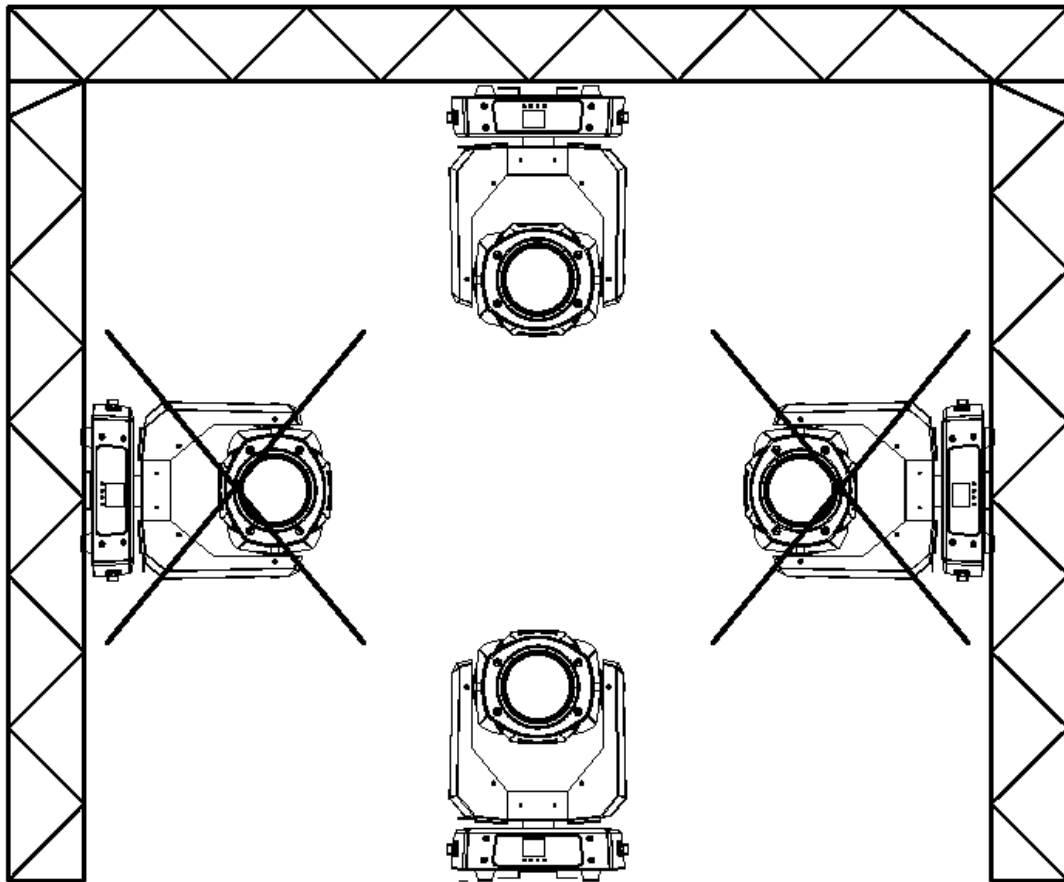
Caution!

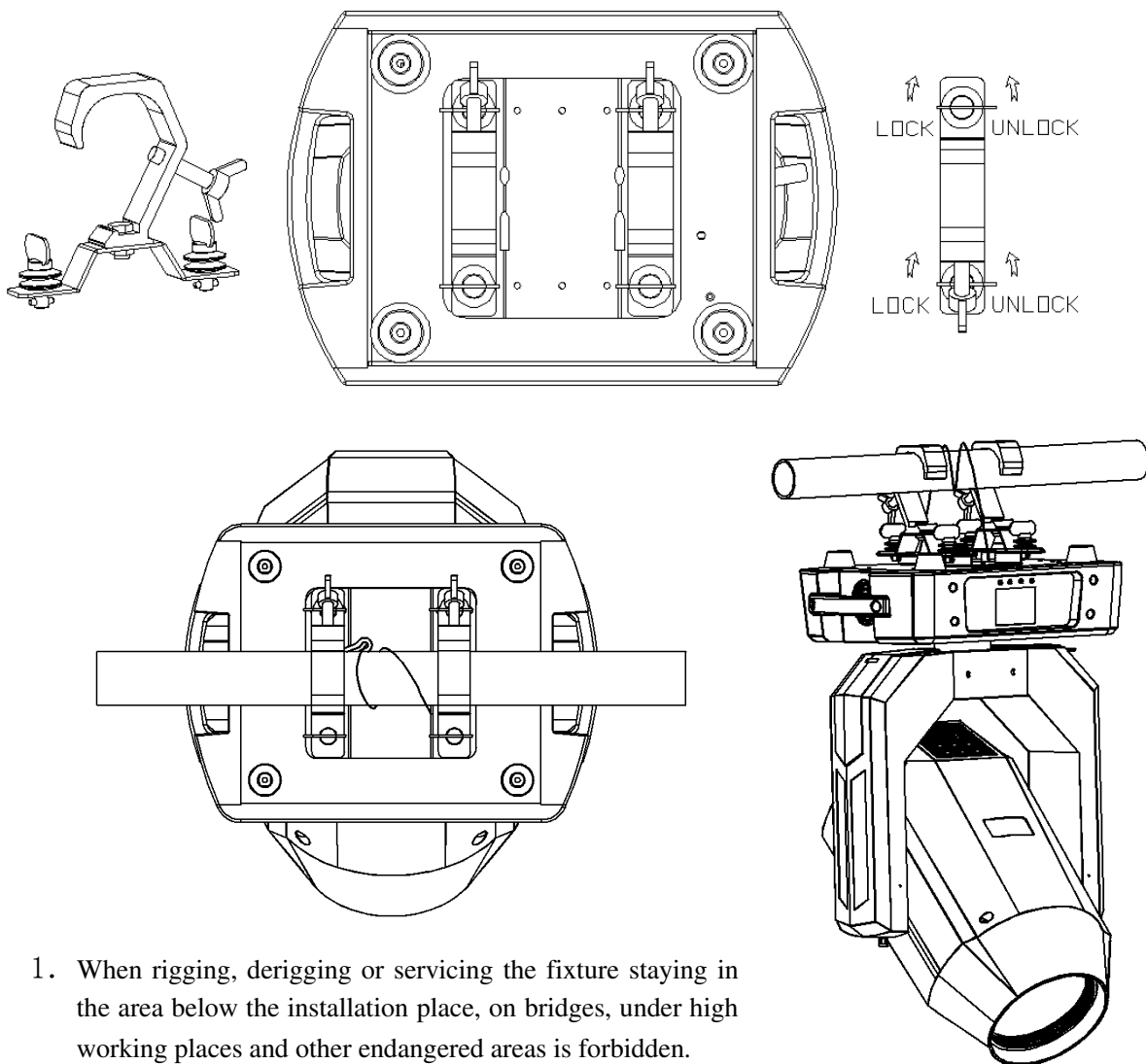
For overhead installation, the fixture must be always secured with a safety wire that can bear at least 10 times the weight of the fixture.

When rigging, derigging or servicing the fixture staying in the area below the installation place, on bridges, under high working places and other endangered areas is forbidden

A structure intended for installation of the fixture(s) must safely hold weight of the fixture(s) placed on it. The structure has to be certificated to the purpose.

Rigging Installation





1. When rigging, derigging or servicing the fixture staying in the area below the installation place, on bridges, under high working places and other endangered areas is forbidden.
2. The operator has to make sure that safety-relating and machine-technical installations are approved by an expert before taking into operation for the first time and after changes before taking into operation another time.
3. The operator has to make sure that safety-relating and machine-technical installations are approved by a skilled person once a year.
4. Allow the fixture to cool for ten minutes before handling.
5. The projector should be installed outside areas where persons may walk by or be seated.
6. **IMPORTANT! OVERHEAD RIGGING REQUIRES EXTENSIVE EXPERIENCE**, including calculating working load limits, installation material being used, and periodic safety inspection of all installation material and the projector.
7. If you lack these qualifications, do not attempt the installation yourself, but use a help of professional companies.
8. **CAUTION:** Fixtures may cause severe injuries when crashing down! If you have doubts concerning the safety of a possible installation, do not install the fixture!
9. The fixture has to be installed out of the reach of public.
10. The fixture must never be fixed swinging freely in the room.

AC POWER

Caution!



In order to prevent electric shock, the lamp must be grounded Switch and ground protection



Connect the fixture to the AC power, Never connect the fixture to the dimmer



The Maximum current cannot be exceed 20A when connecting the fixture together

Voltage

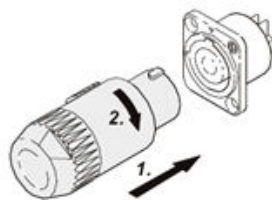
The fixture has in PFC AC power itself, Voltage: AC100V-240V

50/60Hz

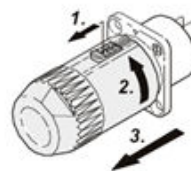
Fuse 6A 5×20

Powercon connect

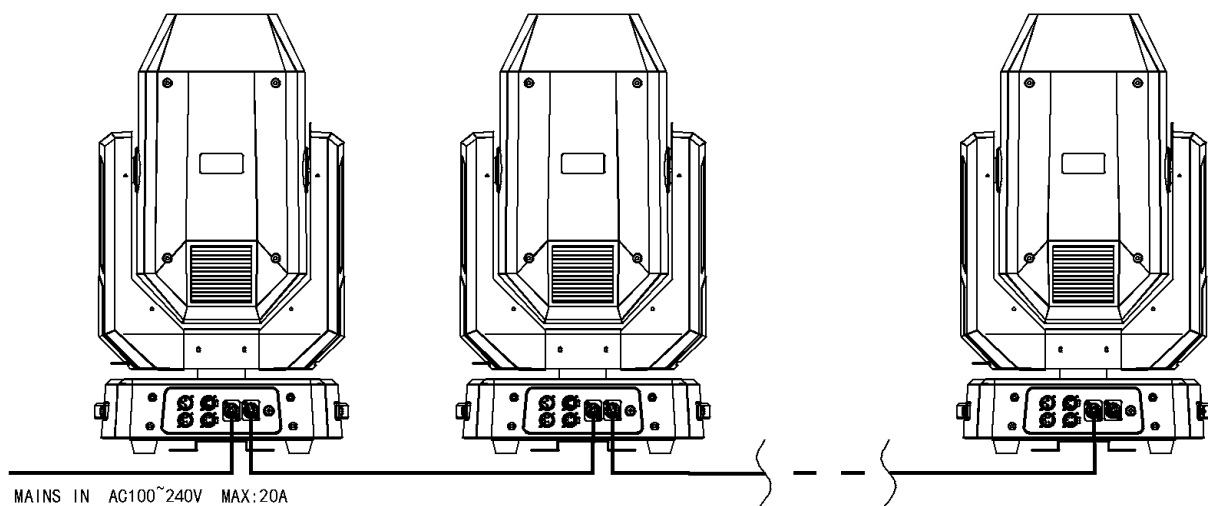
One end of the power line has been installed with a lamp power supply interface, plug, the other end should install a suitable power plug with three pin plug grounding. Must follow the manufacturer's instructions. The following table gives some suggestions for plug connection. If you are unsure or have questions, please consult a qualified electrician.



连接电源线

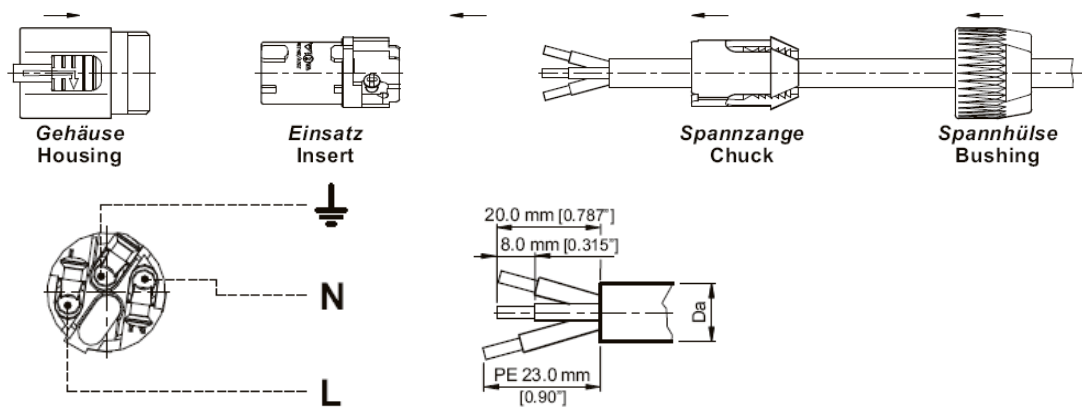


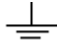
拆卸电源线



For protection from electric shock, the fixture must be earthed!

Connection to the mains



Core	Connection	Plug Terminal Marking
Brown	live	L
Light Blue	Neutral	N
Yellow/Green	Earth	

1,remove the power cord plug

2 cut a length of about 1.5 meters, the specification is 3*1.5 square cable

3 peel the cable in the above dimensions, through the plug end cover and the fastening device

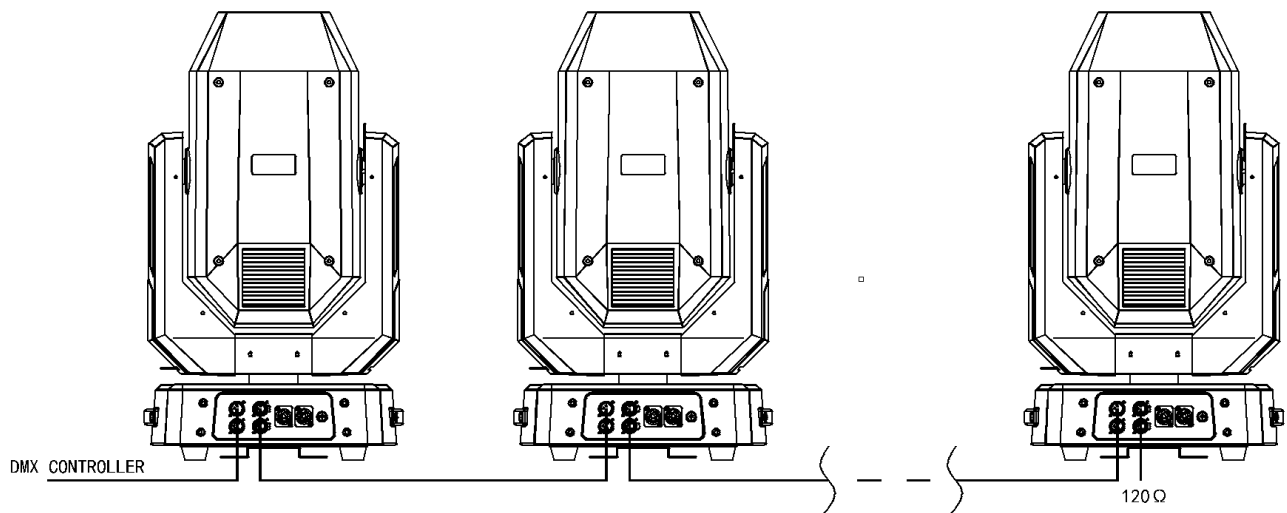
4 place the wire core in the correct position on the plug L - brown N - Blue - Yellow / Green

5 plug assembled and screw end cover

The other end is connected with the appropriate power line 6, with a three pin plug grounding plug

DMX-512 connection DMX Connect

The fixture is equipped with both 3-pin and 5-pin XLR sockets for DMX input and output. The sockets are wired in parallel.:



Plug and socket adapter 3 core and 5 core, 5 core XLR pin 4/ pin 5 is not used

DMX Connection

If you are using the standard DMX controllers, you can connect the DMX output of the controller directly with the DMX input of the first fixture in the DMX-chain. If you wish to connect DMX controllers with other XLR outputs, you need to use adapter cables

Tips

Connect the DMX-output of the first fixture in the DMX-chain with the DMX-input of the next fixture. Always connect one output with the input of the next fixture until all fixtures are connected. Up to 32 fixtures can be connected. Caution: At the last fixture, the DMX-cable has to be terminated with a terminator. Solder a 120 Ω resistor between Signal (-) and Signal (+) into a 3-pin (5-pin) XLR-plug and plug it in the DMX-output of the last fixture

Fixture setting

Address		
Fixture	Channel Mode	16 CH
		18 CH
	Light Lamp	Auto order
		DMX order
	Pan/Tilt	Invert Pan
		Invert Tilt
		Swap Pan-Tilt
Manual	Lamp Control	Turn On
		Turn Off
	Lamp Power	Full Power
		Half Power
	Reset	Head Reset
		P/T Reset
		All Reset
	Channel	
System	Display	Normal
		Turnover
	Backlight Setting	Auto
		Keep On

Information	Device TOU	
	Lamp TOU	
	Replace lamp	
	Replace lamp	
	Fans Speed	Fan 1
		Fan 2
		Fan 3
		Fan 4
Language	中文	
	English	

Turn on the fixture, Press MENU to enter the main MENU.
Press UP/DOWN/LEFT/RIGHT to choose. and then press enter to save the order.

Note: when the manual control option, the lamp will not receive the external DMX signal control, set the MENU button must be returned to the standby interface.

Channel List

16CH	18CH	Channel Name	Value	Function
1	1	COLOR	0--4	WHITE
			5--8	WHITE+RED
			9--12	RED
			13--17	RED+ORANGE
			18--21	ORANGE
			22--25	ORANGE+AQUAMARINE
			26--29	AQUAMARINE
			30--34	AQUAMARINE+GREEN
			35--38	GREEN
			39--42	GREEN+LIGHT GREEN
			43--46	LIGHT GREEN
			47--51	LIGHT GREEN+LAVENDER
			52--55	LAVENDER
			56--59	LAVENDER+PINK
			60--63	PINK
			64--68	PINK+YELLOW
			69--72	YELLOW
			73--76	YELLOW+MAGENTA
			77--81	MAGENTA

			82--85	MAGENTA+CYAN
			86--89	CYAN
			90--93	CYAN+CTO 260
			94--98	CTO 260
			99--102	CTO 260+CTO 190
			103--106	CTO 190
			107--110	CTO 190+CTB 8000
			111--115	CTB 8000
			116--119	CTB 8000+BLUE
			120--123	BLUE
			124--127	BLUE+WHITE
			128--288	ROTATION SLOW--FAST
2	2	SHUTTR	0--3	CLOSED
			4--103	STROBE SLOW--FAST
			104--107	OPEN
			108--207	PULSATION SLOW--FAST
			208--212	OPEN
			213--251	RANDOM STROBE
			252--255	OPEN
3	3	DIMMER	0--255	DIMMER 0--100%
4	4	GOBO	0--3	OPEN

			4--7	GOB01
			8--11	GOB02
			12--15	GOB03
			16--19	GOB04
			20--23	GOB05
			24--27	GOB06
			28--31	GOB07
			32--35	GOB08
			36--39	GOB09
			40--43	GOB010
			44--47	GOB011
			48--51	GOB012
			52--55	GOB013
			56--59	GOB014
			60--63	GOB015
			64--67	GOB016
			68--71	GOB017
			72--113	ROTATION FAST--SLOW
			114--117	STOP
			118--159	ROTATION SLOW--FAST
			160--166	GOB02 SHAKE

			167--172	GOB03 SHAKE
			173--179	GOB04 SHAKE
			180--185	GOB05 SHAKE
			186--191	GOB06 SHAKE
			192--198	GOB07 SHAKE
			199--204	GOB08 SHAKE
			205--211	GOB09 SHAKE
			212--217	GOB010 SHAKE
			218--223	GOB011 SHAKE
			224--230	GOB012 SHAKE
			231--236	GOB013 SHAKE
			237--243	GOB014 SHAKE
			244--249	GOB016 SHAKE
			250--255	GOB017 SHAKE
	5	PRISM 1	0--127	OPEN
			128--255	PRISM1 INSERTED
	6	PRISM 1 ROTATION	0--127	POSITION INDEX
			128--191	ROTATION FAST--SLOW
			192--255	ROTATION SLOW--FAST
	7	PRISM 2	0--127	OPEN
			128--255	PRISM1 INSERTED

	8	PRISM 2 ROTATION	0--127	POSITION INDEX
			128--191	ROTATION FAST--SLOW
			192--255	ROTATION SLOW--FAST
5		PRISM	0--63	OPEN
			64--127	PRISM 1
			128--191	PRISM 2
			192--255	PRISM 1+2
6		PRISM ROTATION	0--127	POSITION INDEX
			128--191	ROTATION FAST--SLOW
			192--255	ROTATION SLOW--FAST
7	9	7 COLOR	0--127	OPEN
			128--255	7 COLOR
8	10	FROST	0--288	FROST 0--100%
9	11	FOCUS	0--255	FAR--NRAR
10	12	PAN	0--255	PAN MOVEMENT
11	13	PAN FINE	0--255	PAN MOVEMENT FINE
12	14	TILT	0--255	TILT MOVEMENT
13	15	TILT FINE	0--255	TILT MOVEMENT FINE
14	16	P/T SPEED	0--255	P/T MOVING FAST--SLOW
15	17	RESET	0--25	SAFE
			26--76	EFFECT RESET

			77--127	P/T RESET
			128--255	RESET ALL
16	18	LAMP	0--25	SAFE
			26--100	LAMP OFF
			101--255	LAMP ON

Maintenance cleaning

Lamps need daily cleaning. Time factor depends on the environment and cleaning cycles related to the following:

- Used with smoking machine, frog machine
- High rate of local wind speed (eg: air inlet and outlet)
- Dust(Such as stage effect)
- If one or more of the above factors, the lamp after 100 hours of operation or need to check the cleaning, and then periodically checked

Contact technician if any repairs are not mentioned here.



WARNING:

Before opening the lamp housing, disconnect the AC power and allow the lamp to cool completely

Be careful when cleaning optical components, and want a clean and bright place operations. Optical Coating fragile and easy to scratch the surface. You can not use solvents will damage plastic or colored surfaces.

To maintain proper cooling, it is necessary to periodically dust on the fan and vents

➤ **Clean Optical parts**

1. Cut off power supply and cool the fixture completely. Open the cover shell
2. Clean the dust with air compressor.
3. With tissue paper stained glass cleaner or pure water, wipe out stubborn stains. But can not scrape the surface should be rubbed gently repeat.。
4. Cotton with alcohol to remove the soot debris. Also available glass cleaner, but use pure water to clean the residual. Slowly circle clean from the inside to the outside.
5. With a clean and soft cloth or air compressor to dry.

➤ **Clean the fan and vents**

With a soft brush, cotton, vacuum cleaner or an air compressor, fan and vents to remove dust.